

Marine weather forecasts for Southern California

The minimum necessary knowledge is organized on the next 2 pages.

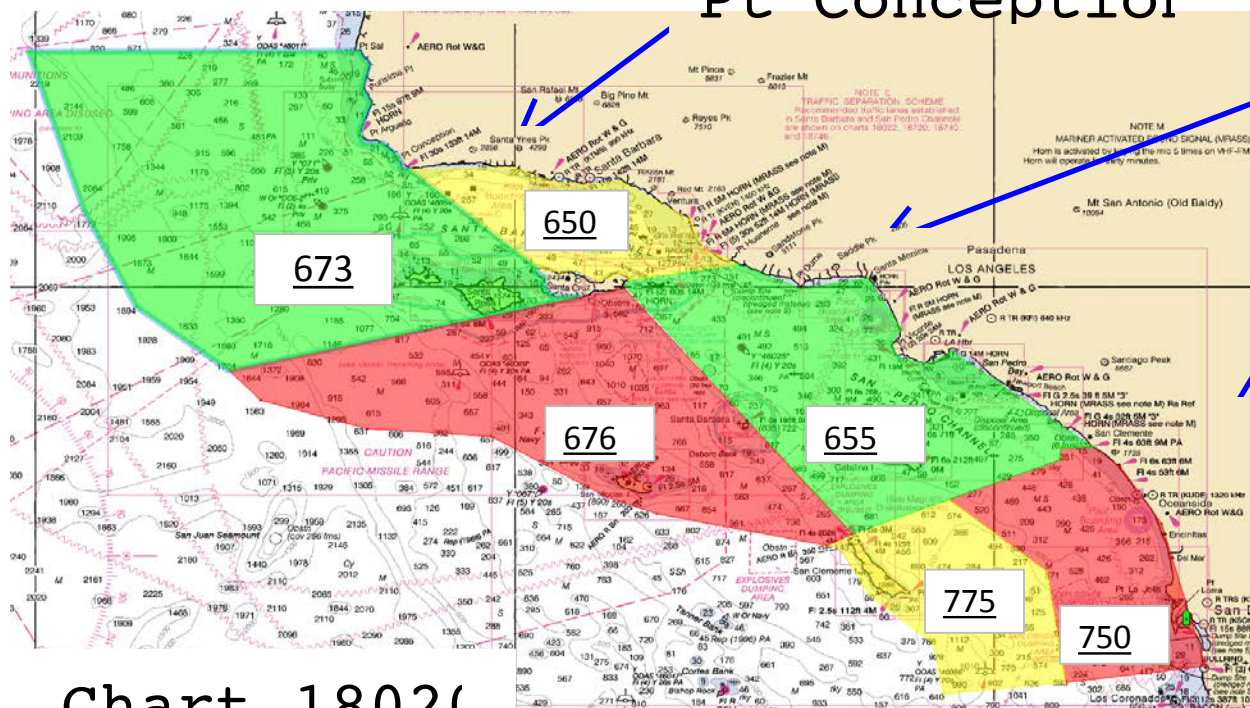
Here is a guide:

- **NOAA marine** forecasts are distinct from other forecasts.
- They are for particular zones with boundaries which let you know if a forecast which you hear on VHF radio is for where you are, where you are going, or not applicable to your navigation.
- While on land with internet, practice with the links on the next 2 pages until you know the names and zone area boundaries. Read all of the preface material for any weather forecast before jumping to the weather itself. Check the zone location, date, and time. Be curious about preface details. Always be skeptical of having the correct weather forecast for your time and place.
- Where precisely is San Mateo Pt?
- Where precisely is Pt. Mugu?
- All links given here are for “coastal” areas. What does that mean? Notice that some areas are “inner waters” and some are “outer waters” but all are considered “coastal”.
- The forecast links given here are for text which is the same data as you hear being read by computer over VHF radio. Text is a quick way to retrieve this information with limited computer resources. Please wonder: Where did the data come from? How did you get it? What are alternative ways to get the same data? Notice the awesome extraordinary miraculous amount of useful data available to you from the Federal government.

NOAA - Marine Weather				http://www.nws.noaa.gov/om/marine/home.htm	
Marine Coastal Waters of West Coast (pzz) - <u>TEXT</u> Data - all zones				http://tgftp.nws.noaa.gov/data/forecasts/marine/coastal/pz/	
<u>SAN DIEGO</u> Office (sgx) - Includes Marine Zones 750 and 775.				http://www.wrh.noaa.gov/sgx/	
<u>LOS ANGELES / OXNARD</u> (lox) - Zones 655, 676, 650, 673, etc.				http://www.wrh.noaa.gov/lox/main.php?suite=marine	
OFFICE	ZONE	FROM	TO	Range offshore	Including
San Diego	<u>750</u>	SAN MATEO POINT (6 NM S of Dana Point)	MEXICAN BORDER	COASTAL TO 30 NM	San Diego and up coast to within 6 miles of Dana Point
		http://tgftp.nws.noaa.gov/data/forecasts/marine/coastal/pz/pzz750.txt			
	<u>775</u>	SAN MATEO POINT (6 NM S of Dana Point)	MEXICAN BORDER	30 NM TO 60 NM	SAN CLEMENTE ISLAND
		http://tgftp.nws.noaa.gov/data/forecasts/marine/coastal/pz/pzz775.txt			
Los Angeles Oxnard	<u>655</u>	POINT MUGU (8 NM SE of Point Huneme)	SAN MATEO POINT (6 NM S of Dana Point)	INNER WATERS	SANTA CATALINA AND ANACAPA ISLANDS and Dana Point
		http://tgftp.nws.noaa.gov/data/forecasts/marine/coastal/pz/pzz655.txt			
	<u>676</u>	SANTA CRUZ ISLAND	SAN CLEMENTE ISLAND	OUTER WATERS TO 60 NM	SAN NICOLAS AND SANTA BARBARA ISLANDS
		http://tgftp.nws.noaa.gov/data/forecasts/marine/coastal/pz/pzz676.txt			
	<u>650</u>	PT. CONCEPTION	POINT MUGU (8 NM SE of Point Huneme)	EAST SANTA BARBARA CHANNEL (north of Santa Cruz Island)	SANTA CRUZ ISLAND and Santa Barbara Town
		http://tgftp.nws.noaa.gov/data/forecasts/marine/coastal/pz/pzz650.txt			
	<u>673</u>	PT. SAL (50 NM N of San Miguel Island)	SANTA CRUZ ISLAND	Westward 60 NM	SAN MIGUEL AND SANTA ROSA ISLANDS
		http://tgftp.nws.noaa.gov/data/forecasts/marine/coastal/pz/pzz673.txt			

Underlined Numbers are internet links to text only marine weather forecasts.
 ALWAYS check forecast's stated location, date, and time
before you even peak at the forecast of weather!

Pt Conception

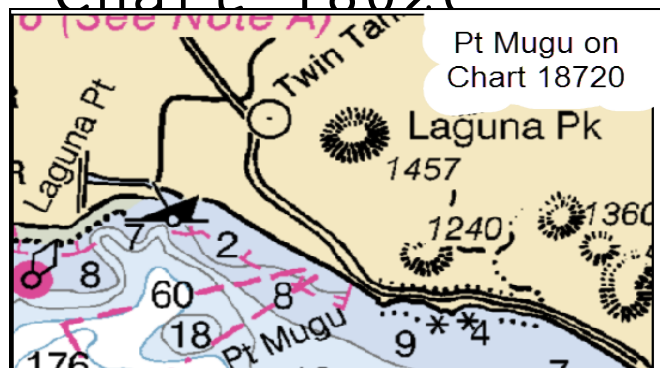


Pt Mugu. See
Chart 18720.

San Mateo Pt.
See Chart 18774

San Diego

Chart 18020



Underlined Numbers are internet links to text only marine weather forecasts.
ALWAYS check forecast's stated location, date, and time
before you even peak at the forecast of weather!